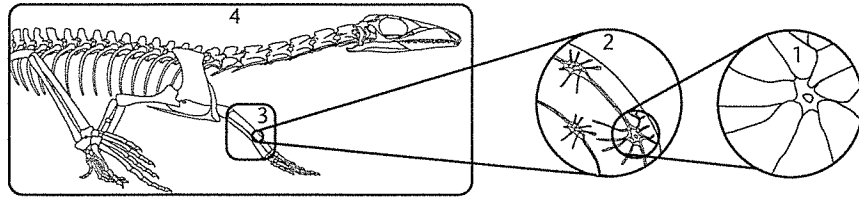


Review and Reinforce

Body Organization

Understanding Main Ideas

The illustration below shows the levels of organization in a reptile. The levels are numbered 1–4, with 4 being the highest level and 1 being the lowest level. Match the items below the illustration with the number that represents the lowest appropriate level of organization in the illustration.



1. tissue ____
2. an object consisting of several different tissues ____
3. the smallest unit of the body ____
4. group of organs that operate as a system ____

Building Vocabulary

Fill in the blank to complete each statement.

5. The _____ is the structure in a cell that contains information that controls a cell's function.
6. _____ tissue makes up organs that are able to contract, or shorten.
7. The inside of the digestive system is lined with _____ tissue.
8. A(n) _____ is the basic unit of structure and function in a living thing.
9. _____ tissue makes up the organs that send messages to control the body.
10. _____ tissue provides support for the body and connects all its parts.

Place the outside corner, the corner away from the dotted line, in the corner of your copy machine to copy onto letter-size paper.

Review and Reinforce

System Interactions

Understanding Main Ideas

Answer the following questions in the spaces provided. Use a separate sheet of paper if you need more room.

1. How do muscles move bones?

2. What is a joint? What are three examples of joints?

3. How do the respiratory, circulatory, digestive, and nervous systems work together to get essential materials to the cells of the body?

Building Vocabulary

Match each term with its definition by writing the letter of the correct definition in the right column on the line beside the term in the left column.

- | | |
|-------------------|--|
| 4. ___ skeleton | a. the place where two bones meet |
| 5. ___ absorption | b. chemical produced by glands of the endocrine system |
| 6. ___ stimulus | c. the body's reaction to a signal in the environment |
| 7. ___ joint | d. all the bones in the body |
| 8. ___ gland | e. substance gotten from food that is needed by body cells |
| 9. ___ nutrient | f. signal in the environment that causes the body to react |
| 10. ___ hormone | g. endocrine system structure that produces chemicals that affect body processes |
| 11. ___ response | h. process by which nutrients move into the blood stream |

Place the outside corner, the corner away from the dotted line, in the corner of your copy machine to copy onto letter-size paper.

Review and Reinforce

Homeostasis

Understanding Main Ideas

Draw the diagram in the space below.

1. Start with the sentence: "Warm environment causes body temperature to rise." Draw a cycle diagram to show how your body would respond to this situation.

Answer the following questions on a separate sheet of paper.

2. Explain the following statement. "The cell membrane is the part of the cell that makes homeostasis possible."
3. Why is managing stress an important part of being healthy?
4. Why is some stress normal and healthy?
5. What four conditions in the body are related to maintaining homeostasis?

Building Vocabulary

Write a definition for each of these terms on the lines below.

6. homeostasis

7. stress

Place the outside corner, the corner away from the dotted line, in the corner of your copy machine to copy onto letter-size paper.